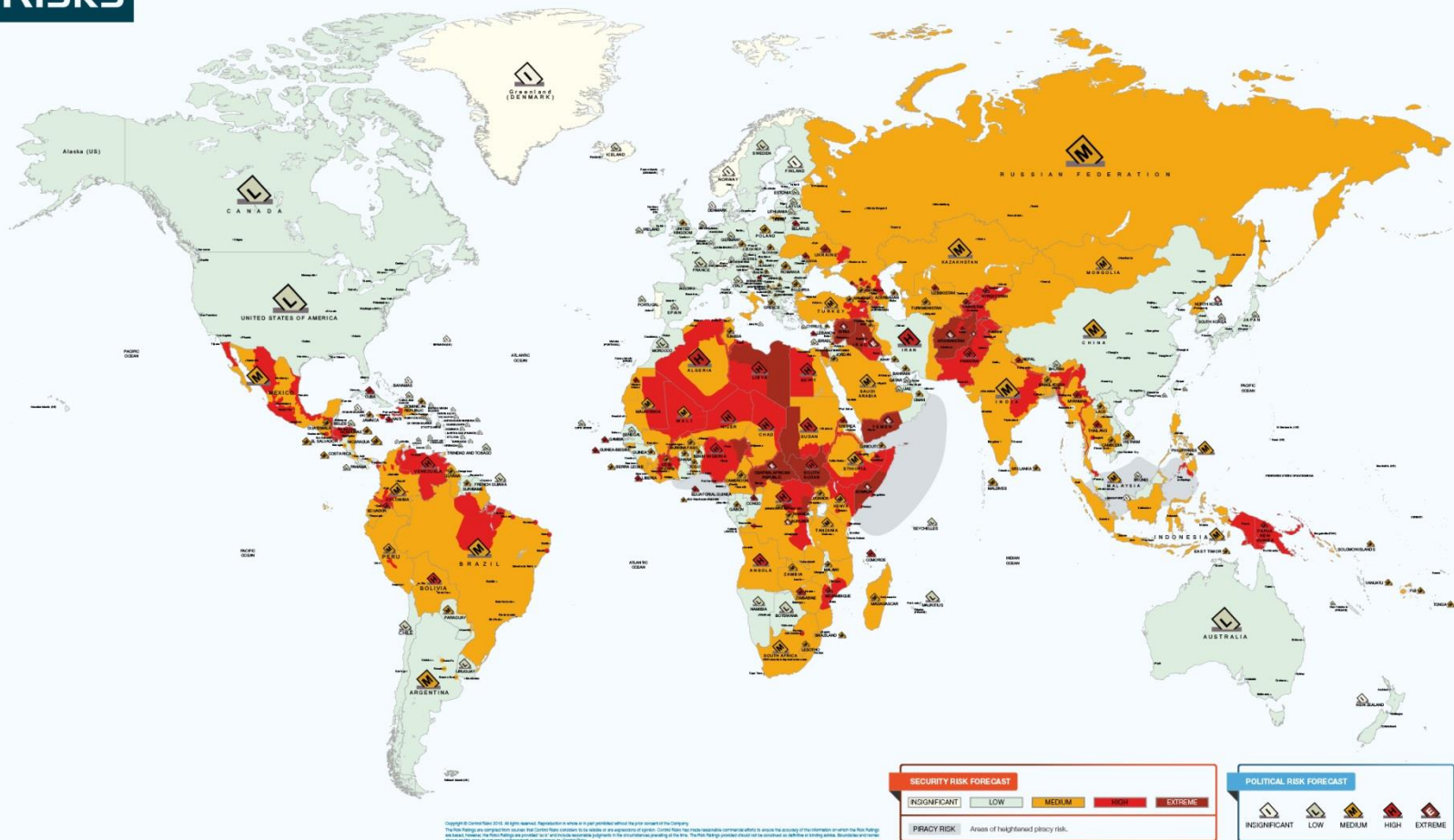




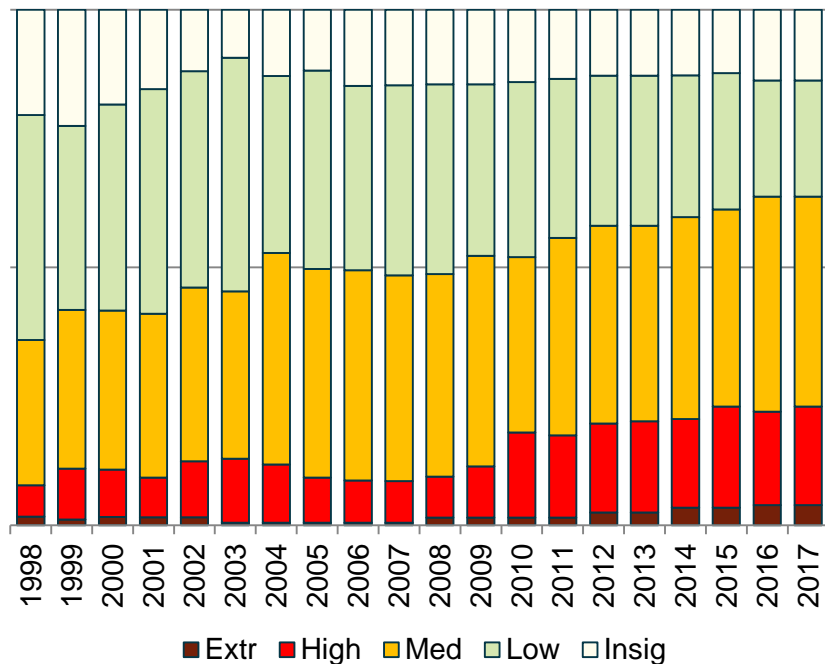
RiskMap 2017

RiskMap 2017

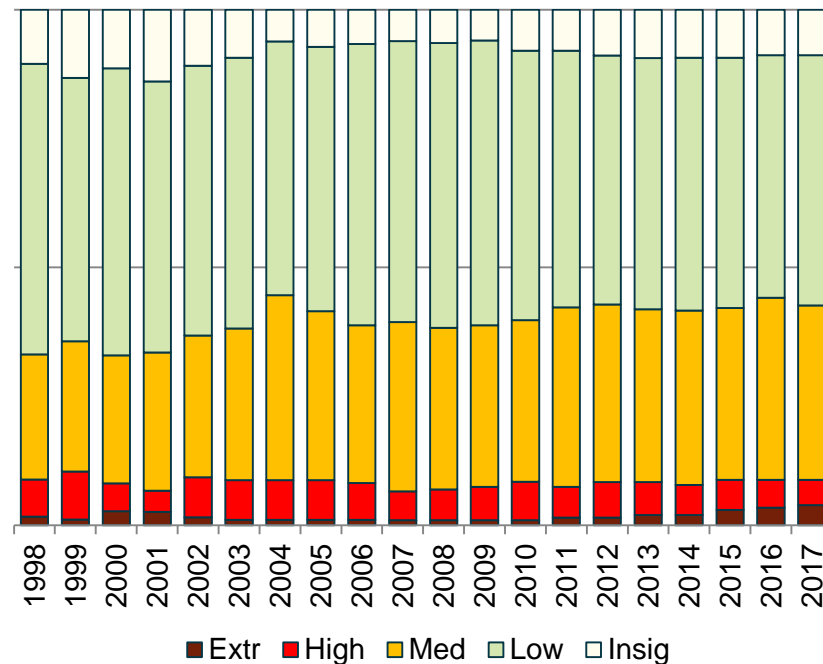


Rising political but stable security risks

Political



Security



POPULISM AND BUSINESS RISK



What is populism?

Movement for systemic change

Anti-globalisation

Single-issue driven

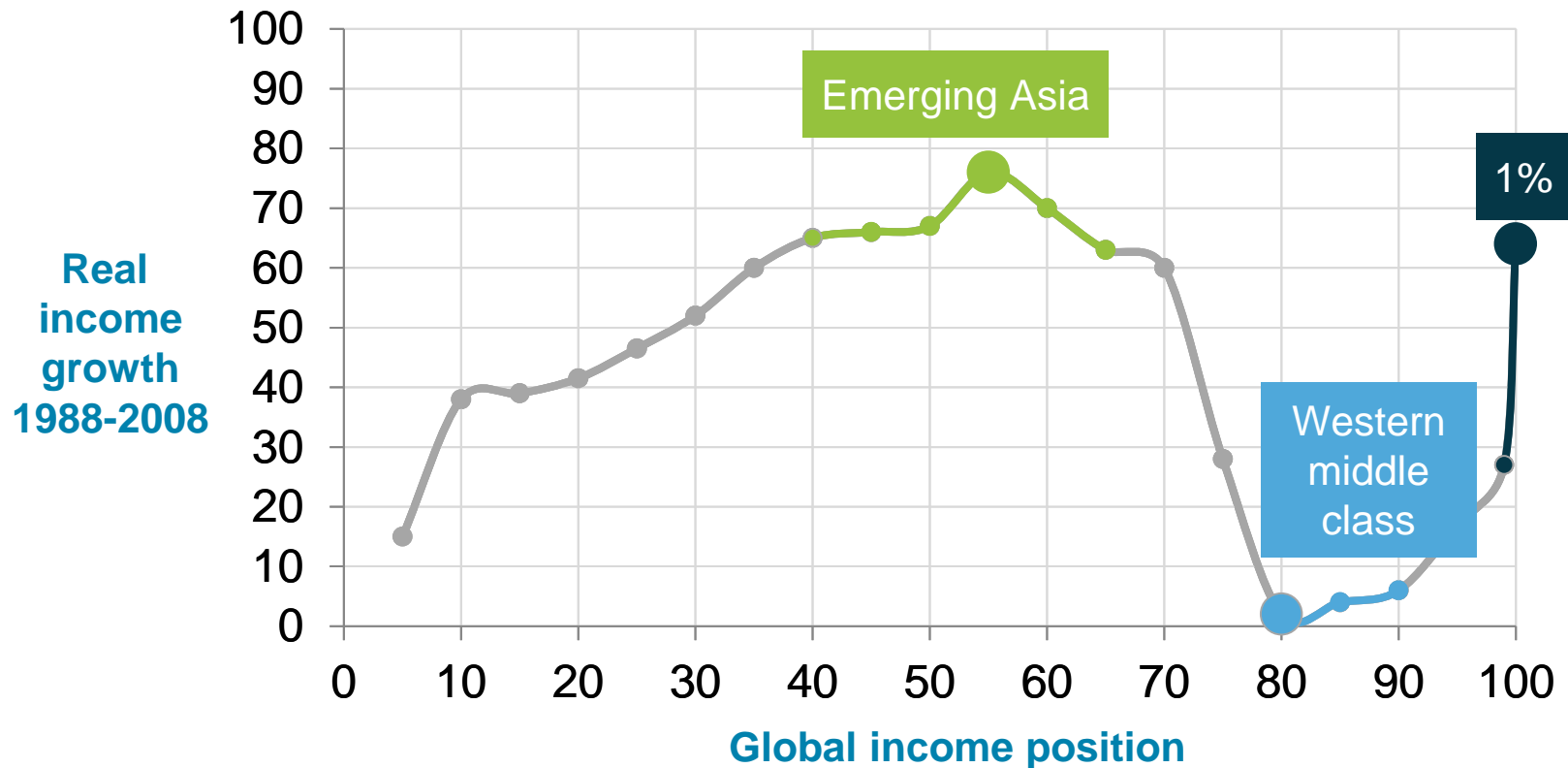
Anti-immigration

Acts on behalf of 'real people'

Promotes community over individual

Personalised and often incoherent

Why is populism succeeding?



Control Risks



RiskMap 2017



GEOPOLITICAL UPHEAVALS



Created by

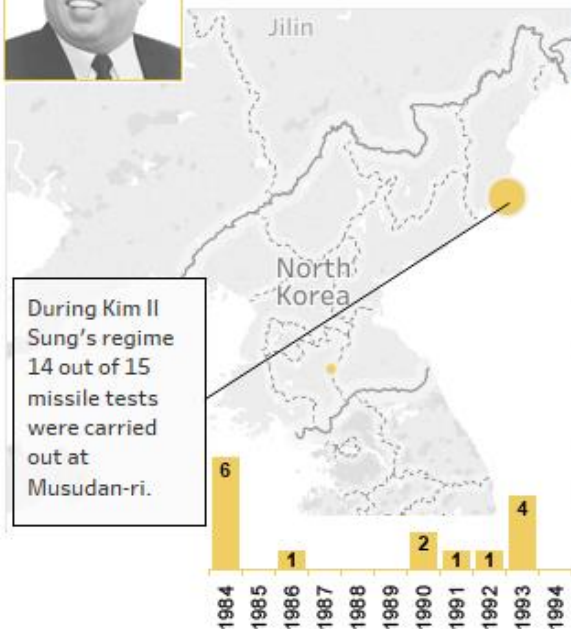
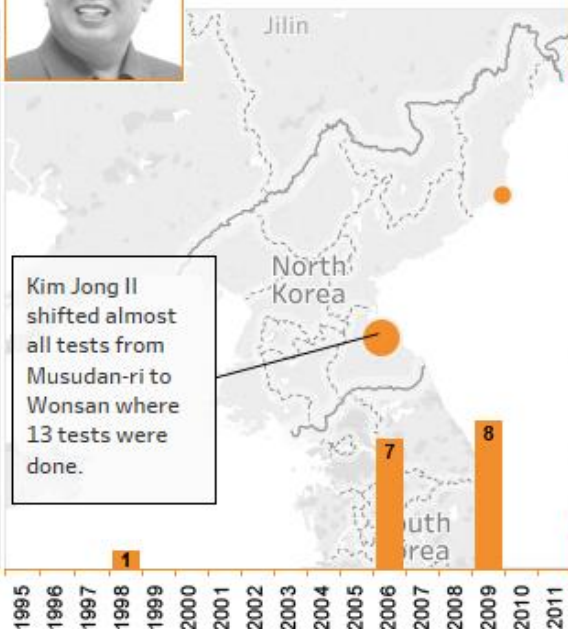
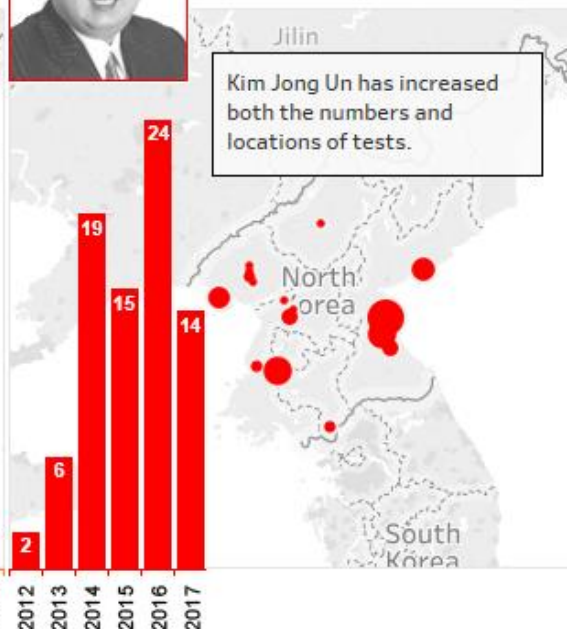


Funded by



BUILDING A SAFER WORLD

Kim Family Missile Tests

**Kim Il Sung tests**
1984 to 1994**Kim Jong Il tests**
1994 to 2011**Kim Jong Un tests**
2011 to July 2017

Control Risks

RiskMap 2017



TERRORIST FRAGMENTATION



FOREIGN
FIGHTERS

IS
RETALIATION

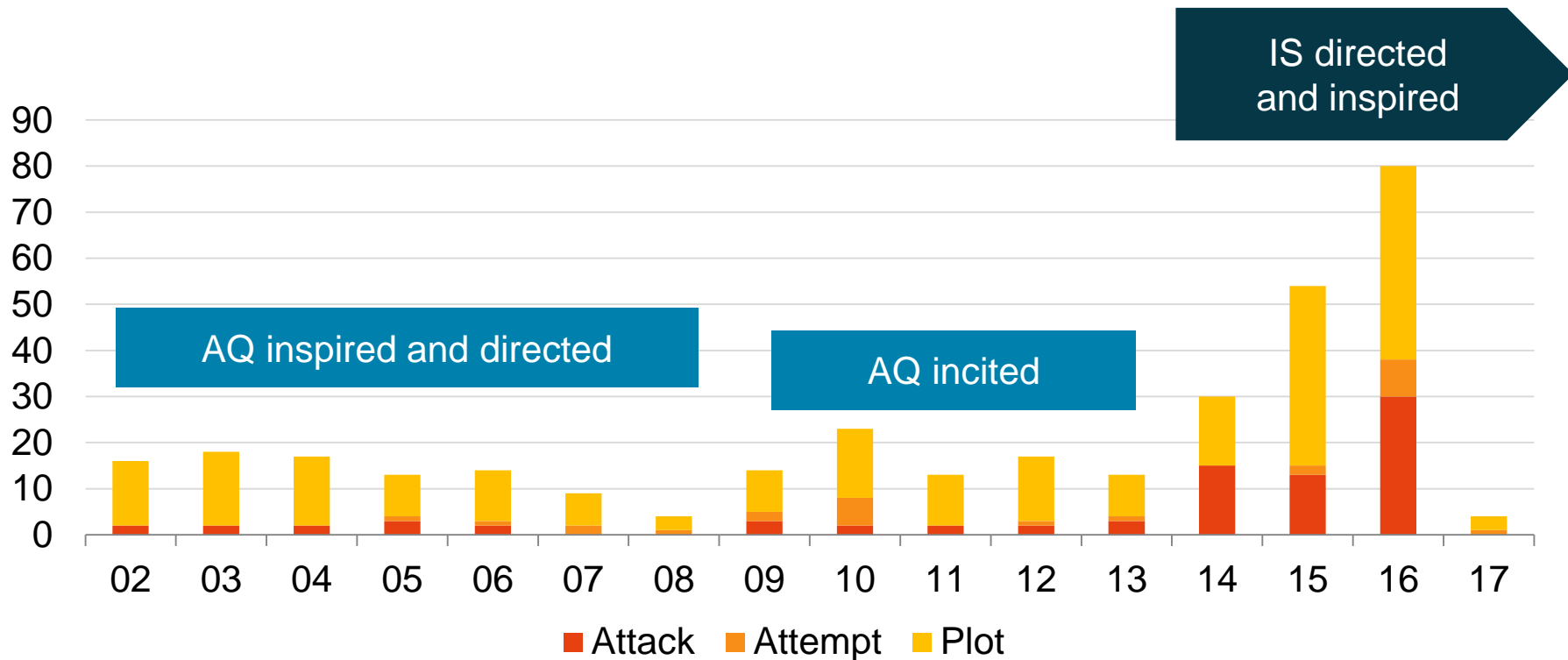
GROUP
FRAGMENTATION

ONLINE
INCITEMENT

PERSONAL
GRIEVANCE

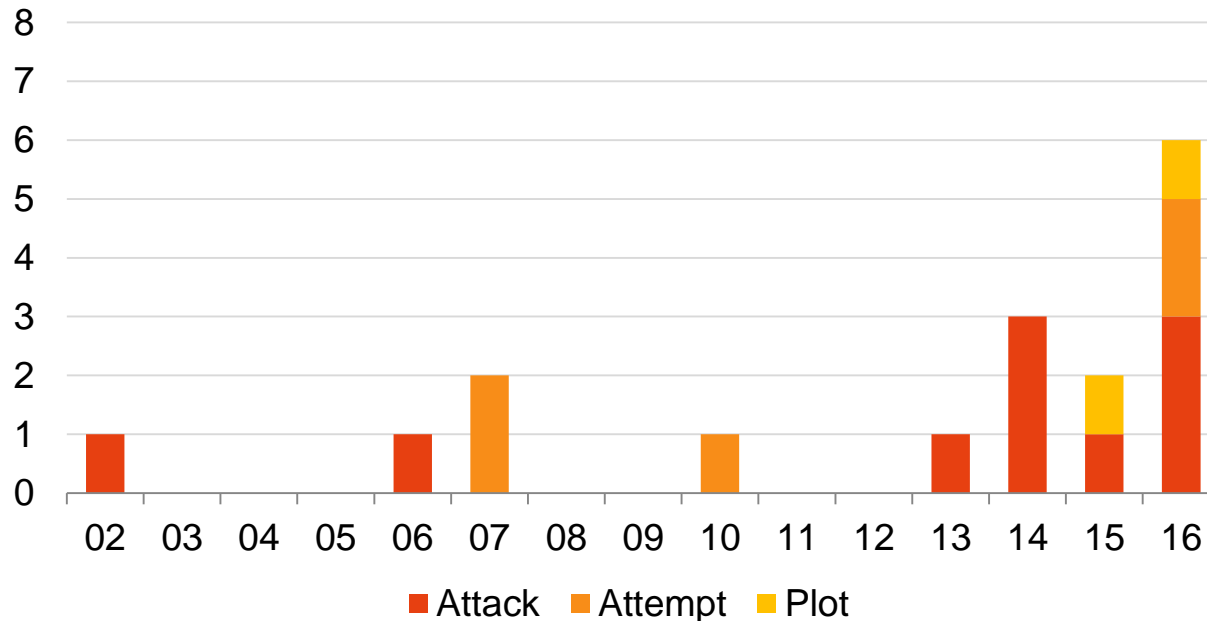
MIGRANTS/
REFUGEES

New phase in Western Islamist extremist terrorism threat

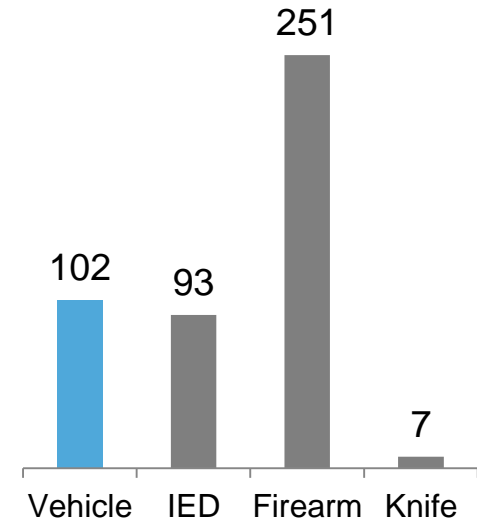


Vehicle ramming attacks increasing in frequency

Vehicle ramming attacks, all Western countries, 2002-16

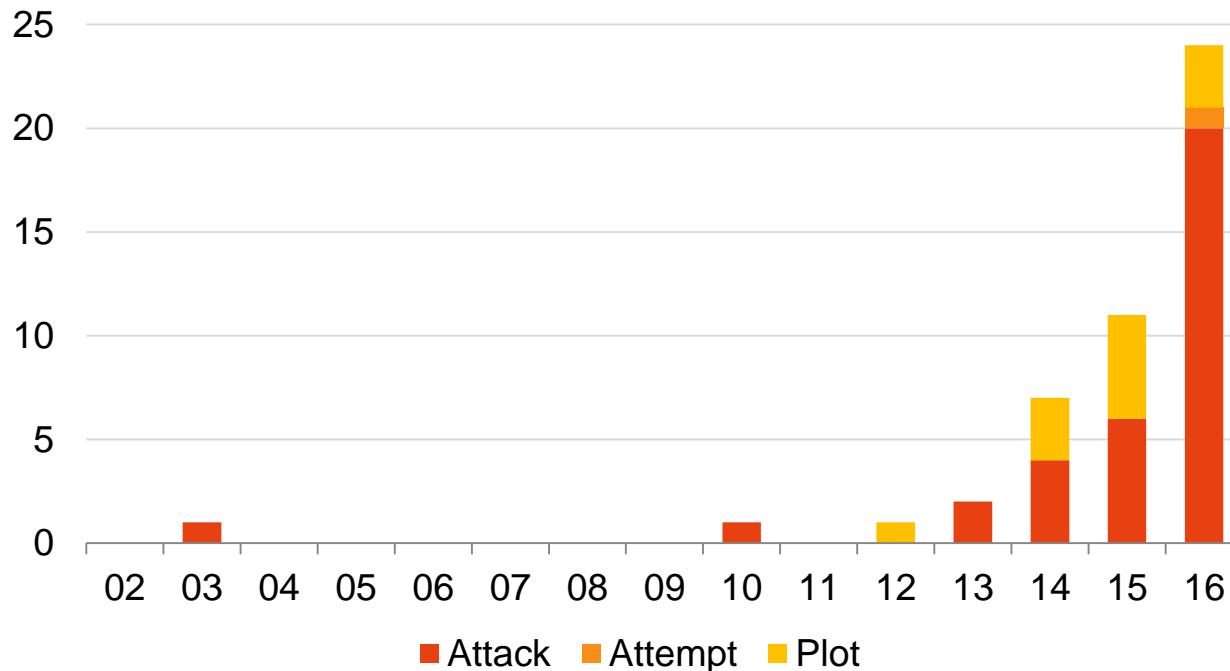


Fatalities by attack type, Western countries, 2005-16

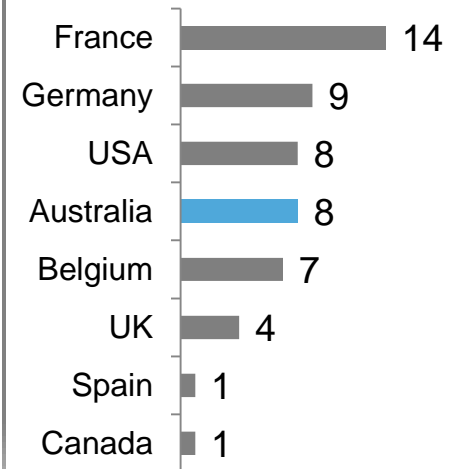


Rising use of knives and other edged weapons

Knife attacks, Western countries, 2002-16

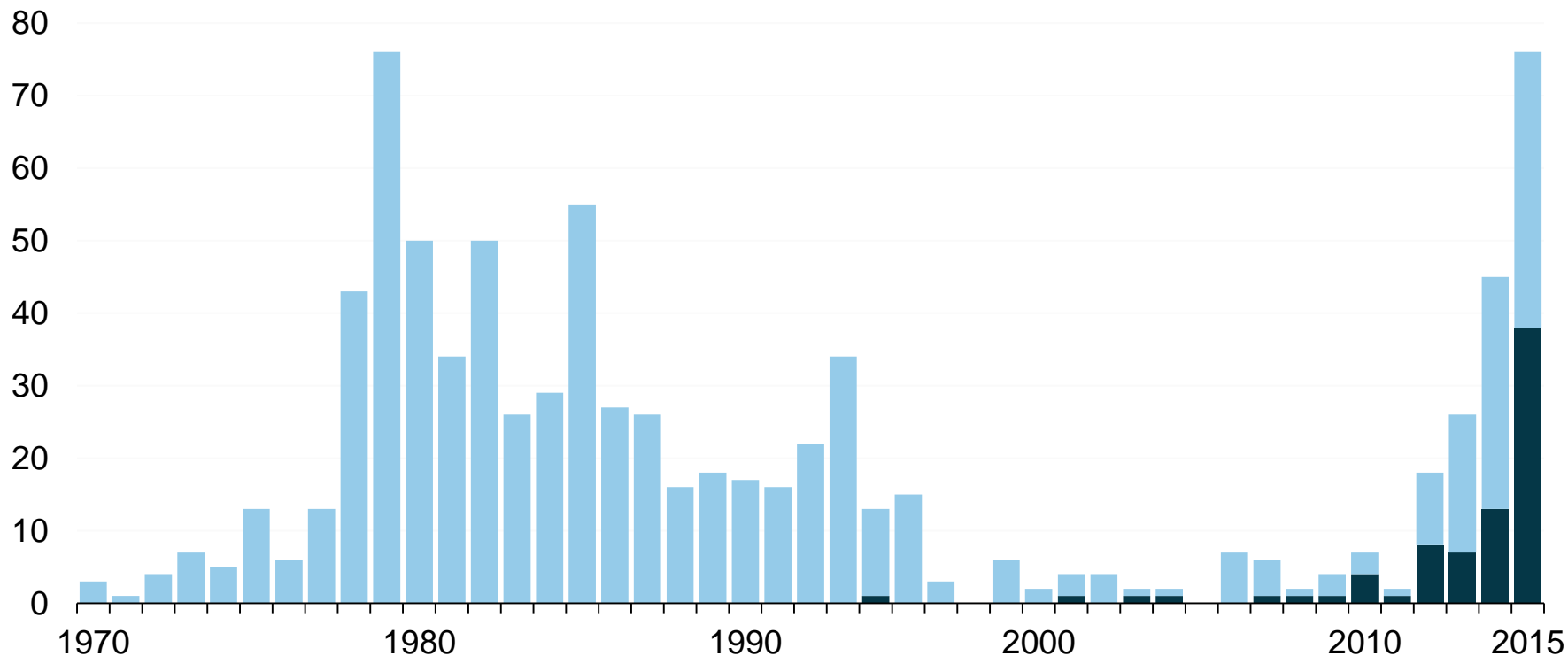


Frequency by country, Western countries, 2014-16



90% of knife attacks have occurred since 2014

Rising frequency of barricade hostage incidents



Corporate responses to the changing threat environment

Reviewing
existing threat
and risk
assessments

Incorporating
new data and
intelligence
sources

Developing
insider threat
and workplace
violence
programmes

Enhancing
operational
risk
management

Revisiting
impact
mitigation
planning

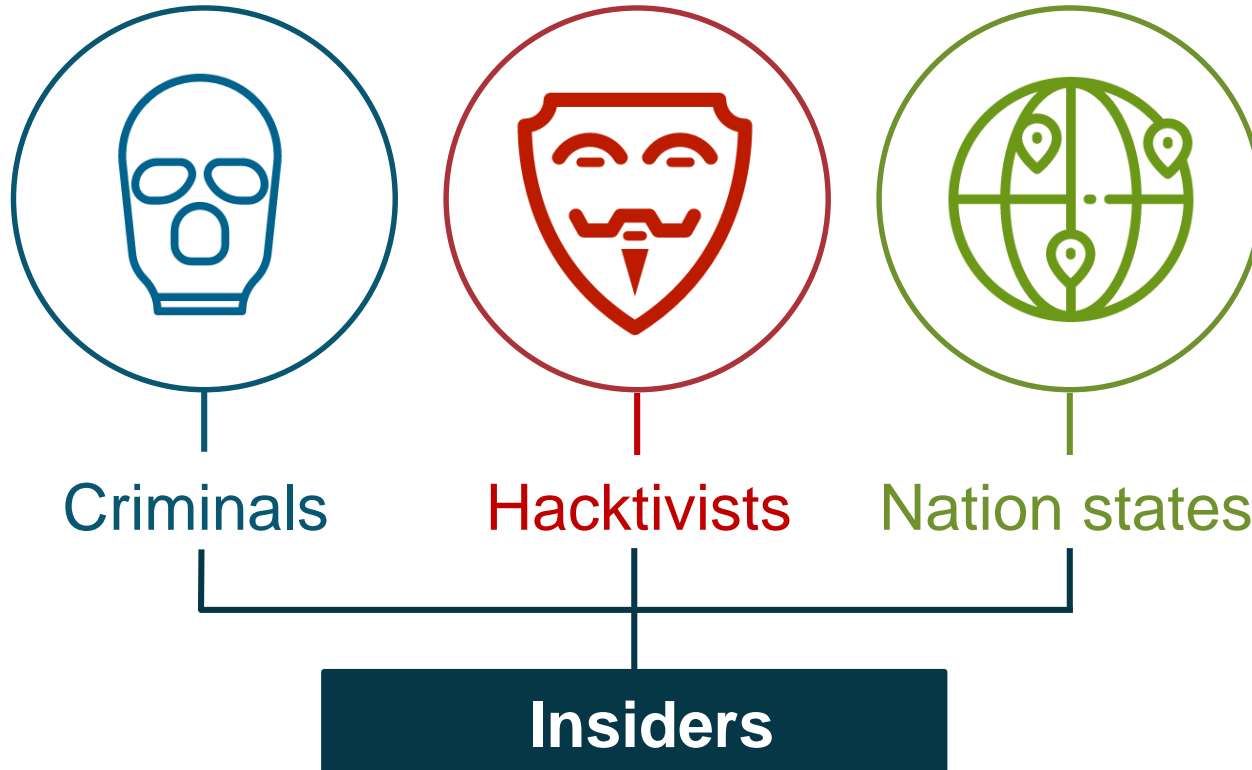
Investing
in training and
peer intel
sharing

CYBER DISRUPTIONS

cyber attack

ing the industries
large percentage of cases
commonly associated
to attacks

Cyber threat actors



Cyber trends



1

Data leak extortion on the rise



2

Growth in destructive and disruptive attacks



3

Supply chain and third parties entry point for threat actors



1

Data leak extortion on the rise





2

Growth in destructive and disruptive attacks





3

Supply chain and third parties entry point for threat actors

You became victim of the PETYA RANSOMWARE!

The harddisks of your computer have been encrypted with an military grade encryption algorithm. There is no way to restore your data without a special key. You can purchase this key on the darknet page shown in step 2.

To purchase your key and restore your data, please follow these three easy steps:

1. Download the Tor Browser at "<https://www.torproject.org/>". If you need help, please google for "access onion page".
2. Visit one of the following pages with the Tor Browser:

<http://petya3jxfp2f7g3i.onion/@N1z7z>
<http://petya3sen7dyko2n.onion/@N1z7z>

3. Enter your personal decryption code there:


7@N1z7-zjiXL3-npCpAT-Up4s37-GFB4iR-BnGsnx-y93cUR-q7qduM-cZkZkR-qo9D4f-JUufFR-c9UuAQ-rTSGBj-cmzDL4-dZ9hyU-9@8fA1

If you already purchased your key, please enter it below.


Key: _

Key recommendations


Meaningful changes in cyber security across an organisation requires **leadership, resources and a culture of security**.



Each company has **unique** threats, critical assets, business requirements, operational standards, cultural considerations, vulnerabilities and risk tolerance.



It is essential to have a **well-exercised crisis response plan** that includes key portions of the entire business.



Create a resilient environment. Undertake a bundle of small projects that incrementally increase the resilience of the organisation over time.



<http://riskmap.controlrisks.com>
carla.liedtke@controlrisks.com



RiskMap 2017